

Maxtor[®]

FIREWIRE DRIVE

Maxtor OneTouch Macintosh User's Guide



P/N: 20241400

Warranty

Maxtor's warranty obligations are limited to the terms set forth: Maxtor warrants only to the original consumer purchaser that new Maxtor products will be free from defects in material and workmanship for 1 year from the date of original purchase.

For a replacement product, the warranty on the replacement device is the remainder of the warranty on the original device or 90 days, whichever is longer. If you discover a defect, Maxtor will, at its option, repair or replace the product at no charge to you, provided you return it during the warranty period, with transportation charges prepaid, to Maxtor in Ireland, Singapore or the USA.

Products must be properly packaged in Maxtor packaging or Maxtor approved packaging to obtain warranty service. Before returning a Maxtor product, please contact Maxtor at: +353 1 204 1111 (in Europe) or 1-800-2MAXTOR (in U.S.) to obtain a Return Material Authorization (RMA) number. A copy of the receipt or a bill of sale bearing the appropriate Maxtor serial number and model number may be required for warranty service. The warranty applies only to the Maxtor products that can be identified by the Maxtor trademark, trade name, serial number or logo affixed to them. Maxtor does not warrant any product that is not manufactured by, for or with permission from Maxtor.

This warranty is not applicable to: Abnormal wear and tear; Abuse, unreasonable use, mistreatment, or neglect; Damage caused during installation of the Product; Damage caused by the equipment or system with which the product is used; Damage caused by modification or repair not made or authorized by Maxtor; Product whose Maxtor Serial Number has been removed or defaced; Damage caused by liquids in the product case; Damage to the products' interface or power connectors; Damage caused by use of non-Maxtor packaging; Damage caused by improper or improperly used packaging; Products that are determined to be stolen.

THIS WARRANTY AND REMEDIES SET FORTH ABOVE ARE EXCLUSIVE AND IN LIEU OF ALL OTHERS, WHETHER ORAL OR WRITTEN, EXPRESSED OR IMPLIED. MAXTOR SPECIFICALLY DISCLAIMS ANY AND ALL IMPLIED WARRANTIES, INCLUDING, WITHOUT LIMITATION, WARRANTIES OF

MERCHANTABILITY AND FITNESS FOR A PARTICULAR PURPOSE AND AGAINST INFRINGEMENT.

Additionally, Maxtor does not warrant that the installation software for Macintosh OS and Windows OS will meet your requirements nor the performance or results that the operation of the program will be uninterrupted or error free. No Maxtor dealer, agent or employee is authorized to make any modification, extension or addition to this warranty.

MAXTOR IS NOT RESPONSIBLE FOR SPECIAL, INCIDENTAL, INDIRECT OR CONSEQUENTIAL DAMAGES RESULTING FROM ANY BREACH OF WARRANTY, OR UNDER ANY OTHER LEGAL THEORY, INCLUDING BUT NOT LIMITED TO LOSS OF DATA, LOSS OF PROFITS, DOWNTIME, GOODWILL, DAMAGE OR REPLACEMENT OF EQUIPMENT AND PROPERTY, AND ANY COSTS OF RECOVERING, PROGRAMMING OR REPRODUCING ANY PROGRAM OR DATA STORED IN OR USED WITH MAXTOR DISK DRIVES OR MAXTOR PRODUCTS CONTAINING MAXTOR DISK DRIVES or any software product distributed therewith.

Some states/jurisdictions do not allow the exclusion or limitation of incidental or consequential damages or exclusions of implied warranties, so the above limitations or exclusions may not apply to you. This warranty gives you specific legal rights, and you may also have other rights that vary from jurisdiction to jurisdiction.

Changes are periodically made to the information herein – which will be incorporated in revised editions of the publication. Maxtor may make changes or improvements in the product(s) described in this publication at any time and without notice. This product tested to comply with FCC standards for home or office use.

Contents

1 Before You Start	1
Maxtor OneTouch™ Drive Components	2
System Requirements	3
Handling Precautions	3
About this Guide	4
Where to Go for Help	4
2 Installing Your Drive	5
Select Your Operating System	5
Installing Drivers Only	13
3 Using Your Drive	15
Connecting and Disconnecting the Drive	15
What is Maxtor OneTouch?	16
Using Retrospect®	17
Changing your Maxtor OneTouch script	18
Using the Maxtor OneTouch Utility	18
Installing Applications on your Drive	21
Moving Data Between Two Systems	21
Playing Games	21
Storing Audio	21
Adding Rubber Feet to Your OneTouch Drive	22
Using Security Lock	22
4 Backing Up Your System	23
5 Disaster Recovery	29
6 Troubleshooting and FAQs	33
7 Glossary	37
Index	39
Maxtor Product Warranty	inside front cover

1 Before You Start

Thank you for selecting a Maxtor product. Your Maxtor OneTouch drive is an external hard drive that allows you to add storage to your computer to hold and organize your documents, videos, music, photos, graphics, and more.

You can also use your new drive to make copies of critical files as a part of your overall backup solution. By using the Maxtor OneTouch feature, your drive can create and store a copy of your important files with a touch of a button.

Whether you use the drive for additional storage, to create a copy of your files, or both, this guide will get you up and running and provide helpful tips for using your drive.

The Maxtor OneTouch drive has the following features:

- Large capacity
- Mac OS Extended format
- Maxtor OneTouch feature: the easy way to make a backup copy of your files
- Plug and Play installation
- High-speed performance
- FireWire®
- Stacks and stands upright to fit on your desk
- Expandable so you can connect up to 63 drives via FireWire.
- Hot-swappable to move the drive between computers
- Power Management features to conserve energy when your drive isn't being used
- Compatible with security locking cables, including those offered by Kensington®

OneTouch Drive Components

Before installing your new drive, review the features shown below in Figure 1.

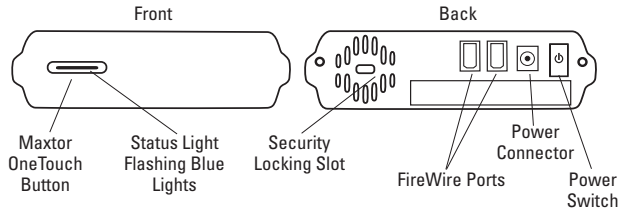


Figure 1. OneTouch Drive Features

Included in this Kit

The Maxtor OneTouch drive comes complete with the components shown in Figure 2. Familiarize yourself with each of these items prior to installation.

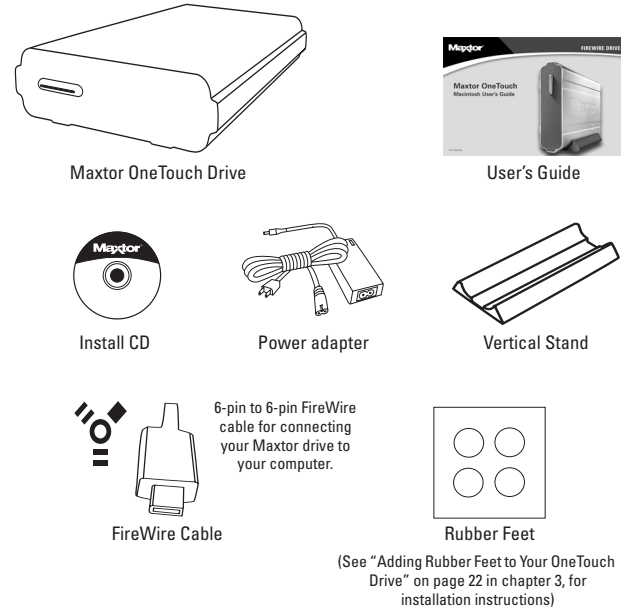


Figure 2. Included in this Kit

System Requirements

The following are the minimum system requirements.

Macintosh

- Mac OS 9.1 or higher or Mac OS X versions 10.1.2 - 10.1.5 and versions 10.2.4 or higher
- CD-ROM drive
- 64 MB RAM or more as required by Mac OS
- FireWire
- Internet connection (for system updates)

Handling Precautions

Handle your drive with care! Follow the precautions listed here or damage to the drive may result and your warranty may become void. Review the “Maxtor Product Warranty” on the inside front cover for more information.

The following precautions can prevent loss of data:

- Do not bump, jar, drop the drive or move while in operation.
- Do not stack drives more than two high.
- Do not set the drive on its side without using the vertical stand as it may fall over and cause damage.
- Do not remove any cables or power cords without properly disconnecting the drive through the operating system.
- Do not set any liquids or drinks on the drive. Liquids will damage the internal electronics.
- Do not attempt to open the drive’s case. This will void your warranty.

About this Guide

The following symbols and conventions are used in this guide:

Bold Used for menu, command, and keyboard selections you make and screens you will see.

Italics Used for emphasis and to identify new terms, which may also be defined in the Glossary.



Helpful information about a particular topic.



Important information to prevent problems and ensure that you are successful in using the drive.

Where to Go for Help

For additional help with your drive, its installation and the software, contact one of the following:

Maxtor Support

Maxtor provides a comprehensive product support section on its web site, including the latest drivers, user guides, and the Knowledge Base at <http://www.maxtorkb.com> (answers to common questions and problems).

For support in Europe and the Middle East, go to:
<http://www.maxtorsupport.com>

Check the Maxtor support web site under **Contact Us** for additional support phone numbers outside the USA.

For technical support in Asia Pacific regions, please e-mail to ApacTech_Assistance@Maxtor.com

If you do not have Internet access, you can call:

1-800-2-MAXTOR (in the United States)

+1 303 678 2015 (Outside the continental United States)

Dantz Support

Contact Dantz® Development Corporation for help with Retrospect® software, making backup copies with Maxtor OneTouch, or restoring files. Dantz provides free telephone support for the first 30 days and a comprehensive support section on its web site, including the latest software downloads, Knowledge Base (answers to common questions and problems), hardware compatibility and contact information.

On the Web: <http://www.dantz.com>

Select the link labeled **Support & Hardware**.

Check the Dantz web site for additional support phone numbers outside the USA.

If you do not have Internet access, you can call:

1-888-777-5664 (in the United States)

+1 925 253 3050 (Outside the continental United States)

2 Installing Your Drive

This chapter describes how to install the Maxtor OneTouch™ drive, the Dantz Retrospect backup software, and how to activate the Maxtor OneTouch button for simplified backups of your valuable data anytime you need them. To ensure a successful installation, follow the steps outlined below.



Please do not connect the drive to your computer until **after** you have installed the software.

Follow these steps to install your drive

- Step 1.** Install the software.
- Step 2.** Connect the drive to your computer.
- Step 3.** Set up the Maxtor OneTouch button.

Software Installation Options

There are two options for the software installation:

- **Full Installation (Recommended)**
Installs the Maxtor software drivers necessary for the OneTouch drive to operate, the OneTouch Utility program and the Dantz Retrospect backup software that allows you to backup data at the touch of a button.
- **Custom Installation**
Installs ONLY Maxtor drivers and OneTouch Utility program.

Select your operating system

The complete, step-by-step installation for popular Macintosh operating systems is described separately in the following sections. Simply find the section for your operating system and follow the steps to get your OneTouch drive up and running.

- **Macintosh OS X:** See below
- **Macintosh OS 9:** See “Macintosh OS 9: Installing the Software” on page 9

Macintosh OS X: Installing the Software

1. Turn on your computer
2. Insert the Maxtor Installation CD into your CD-ROM drive.

After a few seconds, the Install CD should appear on your Macintosh’s desktop.

3. Open the Install CD Icon.
4. Find the folder appropriate for your language and open it.
5. Double-click the **Install Retrospect Express** icon.

The **Authenticate** window will open.

6. Enter your Name and Password for your OS X system.

(This is the Name and Password you set up when you originally installed OS X)

Click **OK**.

The **Retrospect Express** Installer will open.

7. Click **Continue**.

The license screen will appear.

8. Review license agreement and **Accept** to continue.

The **Install Retrospect Express** screen will appear.

9. This screen allows you to specify what type of installation you want and where. It is automatically setup to do a Full Installation (Recommended) into the Applications folder on your Macintosh.

You can select a Custom Installation, using the **Easy Install** menu, as well as change the location of the installation using the **Install Location** menu at the bottom of the screen.

When you are ready, Click **Install**.

The installation will begin.

10. When the installation is complete, the **Installation was successful** screen should appear, asking you to Restart.
11. Click **Restart**.

12. After your Macintosh restarts, **please remove the Maxtor Install CD from your computer**.

13. Proceed to the next section: Connecting the Drive.

Macintosh OS X: Connecting the Drive

The Maxtor OneTouch Drive connects to your computer using the FireWire interface.

Please install the software BEFORE you connect the drive.

Connecting the Power

1. Plug the round female connector from the power adapter into the drive's power connector.
2. Plug the two-pin female connector on the power cord into the power adapter.

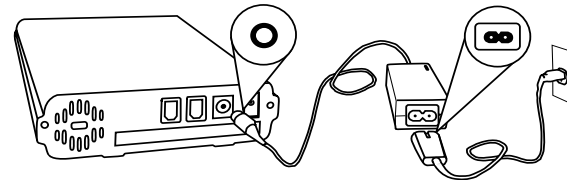


Figure 3. Connecting the Power

3. Plug the standard electrical plug from the power adapter into your power source.
4. Turn on the Maxtor OneTouch Drive using the power switch on the back of the drive. The two blue lights on the front of the drive should illuminate.

Connecting with the FireWire Cable

This section describes how to connect your OneTouch drive using a FireWire cable. For more information about the FireWire interface, go to <http://www.askfor1394.com>.

To connect the FireWire cable

1. Plug one end of the FireWire cable into any available FireWire port on your computer or to any other FireWire device that is connected to your computer.
2. Plug the other end of the FireWire cable into an available FireWire port on the back of the drive.

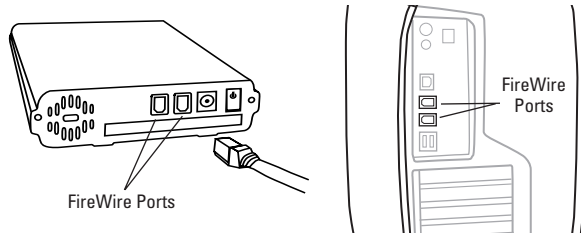


Figure 4. Connecting to a FireWire port

3. After a short time, your drive should appear on the desktop of your Macintosh.

The installation is complete and your Maxtor OneTouch drive is ready to use!

If you did the Full Installation, including Retrospect Express, we encourage you to go to the next section to set up the Maxtor OneTouch feature for easy, automated backup of your important files, anytime, at the touch of a button!

Macintosh OS X: Setting Up the Maxtor OneTouch Feature

Once the drive is recognized by your computer, you can set up the Maxtor OneTouch feature to automatically make a backup copy of your selected files each time you press the OneTouch button.



Before you begin, make sure the Maxtor Install CD is NOT in your CD-ROM drive.

To set up the Maxtor OneTouch button feature

1. Push the button on the front of your drive.

A window appears that says: 'You need an administrator password to start Retrospect'

Enter your Name and Password for your OS X system.

(This is the Name and Password you set up when you originally installed OS X)

2. Click **OK**.

The next screen will appear:

'Would you like to register Retrospect Express now?'

3. Choose **Register Now**, **Register Later** or **Already Registered**.

If you chose **Register Now**, go to the next step.

If you chose **Register Later** or **Already Registered**, **Retrospect Express** will open. Go directly to Step 5.

4. Enter the required information on the form.

- Click **Email** to register via email

- Click **Print** to register via mail
- Click **Register Later** if you do not want to register at this time.



By registering¹ your new drive, you will have the option of receiving product updates, special offers, and important information about other data storage solutions from Maxtor.

Once you've made your selection, **Retrospect Express** will open and the **Maxtor OneTouch Setup** screen will appear.

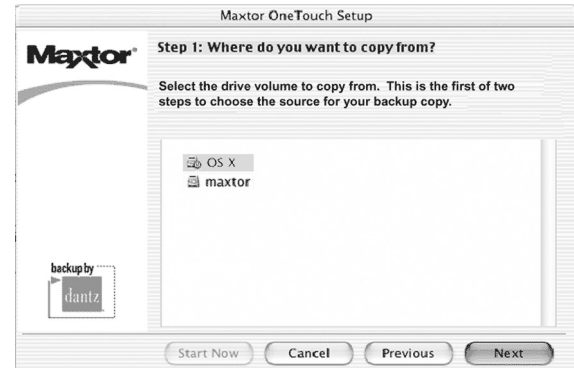
5. Click **Next**.

1. Your registration information is collected and maintained according to the Dantz and Maxtor privacy policies located on their respective web sites.

If you choose to E-mail the information, make sure you are connected to the Internet.

If you choose to print the information, you can fax the form to Dantz Corporation at +1 925 253 9099.

The **Step 1** screen will appear.



6. Select the drive to copy your files from and click **Next**.

The **Step 2** screen will appear.

7. Choose the type of files to copy:

Just Documents copies only documents you have created, including your favorite files, bookmarks, and cookies. This selection is ideal for most users.

Applications and Documents copies application files in addition to documents. This selection allows you to restore an application file if it has become damaged. Refer to the Express User's Guide for instructions on how to make a complete system backup copy.



This selection does not copy your operating system files or Internet cache files.

If you want to create a full backup of your entire system, go to 'Chapter 4: Backing up your system.'

8. Make your choice and click **Next**.
9. The **Step 3** screen is displayed. Select the Maxtor OneTouch drive or another drive on your computer as the location to store the copy of your files. Click **Next**.



You cannot select the same drive to be both the source and destination for your files. The source and destination drives must be different.

The "**Congratulations... now ready**" screen appears.

10. To complete the Maxtor OneTouch setup, click **Finish**.
11. Go to the **Retrospect Express** menu and choose **Quit Retrospect Express** to exit Retrospect Express.

You are now ready to use the Maxtor OneTouch feature.

Each time you touch the button, Retrospect Express makes a copy of the folders and files on your source drive exactly as they exist at that time.



The OneTouch button may not function when Retrospect Express is already running. To correct the problem, quit Retrospect Express.

Your install is now complete. Push the OneTouch button, if you would like, to begin your backup.

See "Using Your Drive" on page 15 in chapter 3, for information on using your drive for common applications and on using Retrospect

Express to make copies of your important files and restore copied files.

Macintosh OS 9: Installing the Software

1. Turn on your computer
2. Insert the Maxtor Installation CD into your CD-ROM drive.

After a few seconds, the Maxtor CD should appear on your Macintosh's desktop.

3. Open the Install CD icon.
4. Find the folder appropriate for your language and open it.
5. Double-click the **Install Retrospect Express** icon.

The **Retrospect** Installer will open.

6. Click **Continue**.

The license screen will appear.

7. Review the license agreement and click **Accept** if you agree.

The **Install Retrospect Express** screen will appear.

This screen allows you to specify what type of installation you want and where. It is automatically setup to do an Easy Install (full installation) which is recommended. It will install **Retrospect Express** into the Applications folder on your Macintosh.

You can select a Custom Installation, using the **Easy Install**

pop-up menu, as well as change the location of the installation using the **Install Location** menu at the bottom of the screen.

8. When you are ready, click **Install**.

The installation will begin.

When the installation finishes, the **Installation was successful** window should appear, asking you to Restart.

9. Click **Restart**.
10. After your Macintosh restarts, **please eject the Maxtor Install CD from your computer**.
11. Proceed to the next section: Connecting the Drive.

Macintosh OS 9: Connecting the Drive

The Maxtor OneTouch Drive connects to your computer using the FireWire interface.

Please install the software BEFORE you connect the drive.

Connecting the Power

1. Plug the round female connector from the power adapter into the drive's power connector.

2. Plug the two-pin female connector on the power cord into the power adapter.

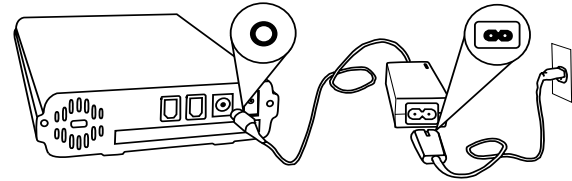


Figure 5. Connecting the Power

3. Plug the standard electrical plug from the power adapter into your power source.
4. Turn on the Maxtor OneTouch Drive using the power switch on the back of the drive. The two blue lights on the front of the drive should illuminate.

Connecting with the FireWire Cable

This section describes how to connect your OneTouch drive using a FireWire cable. For more information about the FireWire interface, go to <http://www.askfor1394.com>.

To connect the FireWire Cable

1. Plug one end of the FireWire cable into any available FireWire port on your computer or any other FireWire device that is connected to your computer.

2. Plug the other end of the FireWire cable into either of the available FireWire ports on the back of the drive.

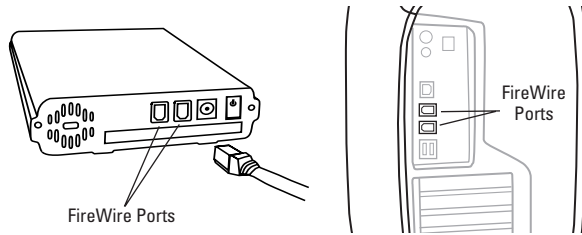


Figure 6. Connecting to a FireWire port

3. After a short time, your new drive will appear on the desktop of your Macintosh.

The installation is complete and your Maxtor OneTouch drive is ready to use!

If you did the Full Installation, including Retrospect Express, we encourage you to proceed to the next section to set up the Maxtor OneTouch feature for easy, automated backup of your important files, anytime, at the touch of a button!

Macintosh OS 9: Setting Up the Maxtor OneTouch Feature

Once the drive is recognized by your computer, you can set up the Maxtor OneTouch feature to automatically make a backup copy of your selected files each time you press the OneTouch button.



Before you begin, make sure the Maxtor Install CD is NOT in your CD-ROM drive.

To set up the Maxtor OneTouch button feature

1. Push the button on the front of your drive.

A window should appear: **'Would you like to register Retrospect Express now?'**

2. Choose either **Register Now**, **Register Later** or **Already Registered**.

If you choose **Register Now**, go to the next step.

If you chose **Register Later** or **Already Registered**, **Retrospect Express** will open. Go directly to Step 4 - Maxtor OneTouch Setup.

3. Enter the required information on the form.

- Click **Email** to register via email
- Click **Print** to register via mail
- Click **Register Later** if you do not want to register at this time.



By registering¹ your new drive, you will have the option of receiving product updates, special offers, and important

1. Your registration information is collected and maintained according to the Dantz and Maxtor privacy policies located on their respective web sites.

If you choose to E-mail the information, make sure you are connected to the Internet.

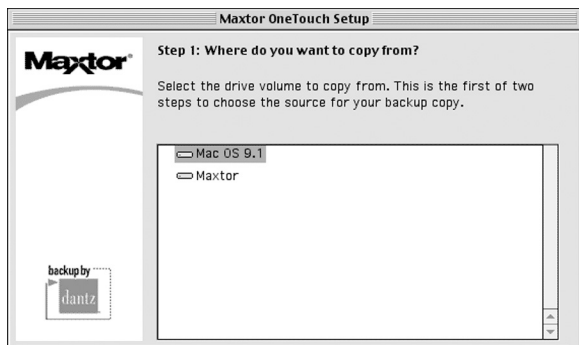
If you choose to print the information, you can fax the form to Dantz Corporation at +1 925 253 9099.

information about other data storage solutions from Maxtor.

4. Retrospect Express will open and the **Maxtor OneTouch Setup** screen will appear.

Click **Next**.

The **Step 1** Screen will appear.



5. Select the drive to copy your files from and click **Next**.

The **Step 2** screen will appear.

6. Choose the type of files to copy:

Just Documents copies only documents you have created including your favorite files, bookmarks, and cookies. This selection is ideal for most users.

Applications and Documents copies application files in addition to documents. This selection allows you to restore an

application file if it has become damaged. Refer to the Retrospect User's Guide for instructions on how to make a complete system backup copy.



This selection does not copy your operating system files or Internet cache files. If you want to create a full backup of your entire system, go to "Backing up your complete system" on page 25 in chapter 4.

Make your choice and click **Next**.

7. The **Step 3** screen is displayed. Select the Maxtor OneTouch drive or another drive on your computer as the location to store the copy of your files. Click **Next**.



You cannot select the same drive to be both the source and destination for your files. The source and destination drives must be different.

The "**Congratulations...now ready**" screen appears.

8. To complete the Maxtor OneTouch setup, click **Finish**.
9. Go to the **File** menu and choose **Quit** to exit Retrospect Express.

You are now ready to use the Maxtor OneTouch feature!

Each time you touch the button, Retrospect Express makes a copy of the folders and files on your source drive exactly as they exist at that time.



Depending on the amount of files, your first time backup, may take a long time.

The OneTouch button may not function when Retrospect Express is already running. To correct the problem, go to the **File** menu in Retrospect, and choose **Quit**.

See “Using Your Drive” on page 15 in chapter 3, for information on using your drive for common applications and on using Retrospect Express to make copies of your important files and restore copied files.



The drive will not operate with more than one computer at a time.

Maxtor does not support using the drive as a startup disk for the Macintosh.

Using your OneTouch button for backup



Only the current versions of your files are saved. Backup copies made with the default Maxtor OneTouch feature do not include earlier versions of files you have deleted since the last time you pressed the Maxtor OneTouch button.

Any files that are currently open are not saved, so close any files you wish to be copied.

You may customize Retrospect to create backup copies of your files which will include revisions made on a daily basis. See the Express User’s Guide, included on the install CD.

Your hardware and software installation is now complete. See “Using Your Drive” on page 15 in chapter 3, for information on using your drive for common applications and on using Retrospect to make copies of your important files and restore copied files.

Installing Drivers Only

No drivers are necessary. This section describes how to install your new drive without installing Retrospect Express software.



The Maxtor OneTouch button feature will not function if you choose to install under this option.

If you’re using OS 9, connect your OneTouch drive as described in “Macintosh OS 9: Connecting the Drive” on page 10. If you’re using OS X, connect your drive as described in “Macintosh OS X: Connecting the Drive” on page 6.

2

To Install Retrospect at a Later Time

If you wish to install a complete copy of Retrospect software and the Maxtor OneTouch feature at a later time, you can do so by following the original installation instructions provided in the “Setting Up the Maxtor OneTouch Feature” detailed earlier in this chapter for each operating system.

3 Using Your Drive

Once installed, you can use your new Maxtor OneTouch drive in the same way you use the other drives on your computer. Some of the basic ways you can use your new drive are:

- Move or copy files or folders from your other drives, CD-ROMs, or other storage devices.
- Within virtually any application, save files to and open files from the new drive.
- Store video files, games, spreadsheets, and other commonly used files.
- Store copies of important files from your desktop or laptop computer.

This chapter offers additional suggestions on how to use your new drive.

OneTouch Drive lights and their messages

The blue lights on the front of your drive provide useful information.

Table 1: OneTouch lights

Message	Status
Both lights on	Power on/ready to go
Alternating blinking	Processing command/transferring data
One off and one blinking	Power saving mode

Connecting and Disconnecting the Drive

The FireWire interface allows you to *hot swap* your new Maxtor OneTouch Drive; that is, connect and disconnect the drive while the computer and your drive are running.

To connect the drive

1. Make sure the drive is turned on and that both blue lights are illuminated.



Connecting your computer to a drive that is not powered on can cause your computer to behave erratically or freeze.

2. Plug the FireWire cable into the drive and your computer.

After a moment, the computer will recognize that your drive is connected and the drive icon will appear on the desktop of your Macintosh.

To disconnect the drive

1. From the desktop, drag the drive icon to the Trash.

The drive will disappear from the desktop.

2. Disconnect your drive from the computer.

What is Maxtor OneTouch?

Maxtor OneTouch is an easy way to make backup copies of your files. By pressing the button on the front of your drive, your files are copied. It's that simple.

How does the Maxtor OneTouch drive work?

Each time you touch the button, the Maxtor OneTouch drive opens up Dantz Retrospect Express and makes a copy of the files on your source drive, exactly as they exist.

Here are some important guidelines:

- Only the current versions of your files are copied. The Maxtor OneTouch drive does not keep backup copies made in earlier sessions.
- If you delete files from your source drive and then push the button, those same files will also be deleted from your Maxtor OneTouch drive.
- Any files that are currently open will not be copied to the Maxtor OneTouch drive. Close any files you want copied before pressing the button.

Can I customize the Maxtor OneTouch Backup?

Yes. Using Retrospect Express, you can customize OneTouch backup in a variety of ways. The default type is a **duplicate** backup (outlined in "How does the Maxtor OneTouch drive work?" above). You can even customize how the duplicate replaces files on the destination drive.

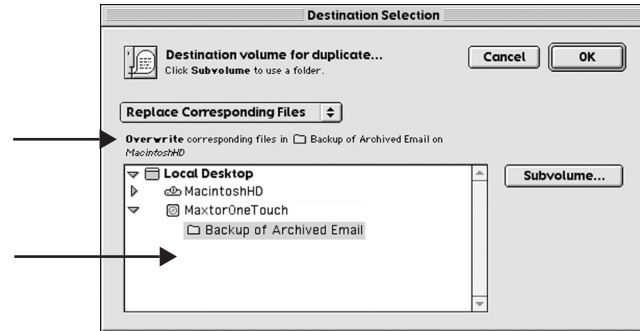
If you modify the destination location for the Maxtor OneTouch script or any other duplicate script in Retrospect, it will default to "replace the entire contents" of the selected drive or folder. This

will erase all files on the destination drive's backup folder and will only copy the selected files from the source drive's folder. Use with caution!

It is strongly recommended that you:

- Select the option to "Replace Corresponding Files" (see Figure 7)
- Define a folder on the destination drive dedicated to your duplicate backups.

Figure 7.



Archiving files

Archive is another type of backup you can do with Retrospect Express. Note that using this function will permanently remove files from the source drive and place them on the destination drive. If your destination drive is lost or damaged, you will have lost your only copy of these files.

Can I do other types of backup?

Yes. Using Retrospect Express, you can also create a script to back up multiple revisions of each file or to back up multiple drives or folders to a single backup set. This is the second type of backup you can create and customize. To access files contained in the backup set, use the Retrospect software.

More Information

To learn more about creating a backup script, go to www.maxtorkb.com and enter “OneTouch” in the search function. Refer to the Express User’s Guide for detailed information about creating custom scripts and backup sets.

Using Retrospect

Your Maxtor OneTouch drive includes a full copy of the Dantz Retrospect Express software. It includes many powerful and convenient features. In addition to enabling the Maxtor OneTouch feature, you can:

- Automatically make copies of your most important files.
- Make copies of your data onto other popular storage devices, including CD-R, DVD-R, and selected tape drives.

- Recover lost work easily – restore a single file or the contents of an entire drive in one easy step.
- Save time and minimize storage space needs.

If you installed your drive with the Maxtor OneTouch feature, the Retrospect Express software is already installed.

Retrospect User guide

Use the **Express User’s Guide** in the Retrospect Express Folder on your Macintosh. If it is not installed on your computer, you can access it on the Maxtor installation CD.

Retrospect Express User’s Guide on the CD:

1. Insert the Maxtor Installation CD into your CD-ROM drive.
The Install CD icon will appear on your desktop.
2. Double-click the CD icon to open it.
3. Open the folder appropriate for your language.
4. Drag the **Express User’s Guide** onto your Macintosh’s hard drive.
5. Double-click the **Express User’s Guide** to open it.

Note: You will need Adobe Acrobat Reader installed to open the guide. If you do not have it, you can download and install it for free from Adobe’s website: <http://www.adobe.com>

Restoring Files

It is easy to restore files that have been backed up using the Maxtor OneTouch feature.

To restore files:

1. Select the drive containing the copy of your files.
2. Open the **Retrospect Backup** folder and then the folder that contains your backup copy.

The folder is named 'Backup copy of *your_disk_name*' (Only the first 9 characters of this name will be used).

3. Drag the file or group of files you wish to restore to the desired folder as you would to move or copy any other file.

If you are not sure where the files you want to restore are located, use your operating system's Find command to search the drive containing the backup data.

Changing Your Maxtor OneTouch Script

1. Open **Retrospect Express**.

The **Retrospect Express Directory** window will open.

2. Click the **Automate** tab.

The **Scripted Retrospect operations** window will appear.

3. Click **Scripts**.

The **Scripts** window will appear.

4. Select the **Maxtor OneTouch** script.
5. Press the **Delete** key on your keyboard.

A window appears asking: 'Really forget Script?'

6. Click **OK**.
7. Quit Retrospect Express by going to the **File** menu and selecting **Quit**.
8. Push the button on the front of the drive.

The Maxtor OneTouch setup wizard will start.
For OS X: See "To set up the Maxtor OneTouch button feature" on page 7 in chapter 2. For OS 9: See "To set up the Maxtor OneTouch button feature" on page 11 in chapter 2.

Adding Maxtor OneTouch Advanced Features

You can further customize your Maxtor OneTouch script with advanced features from Retrospect Express. To learn more about these advanced features, use the **Express User's Guide** in the Retrospect Express Folder on your Macintosh. If is not installed on your computer, you can access it on the Maxtor installation CD.

Using the Maxtor OneTouch Utility

Your Maxtor OneTouch drive includes a utility that allows you to:

- Find out more information about your drive
- Customize your OneTouch button to launch a different application or file.

Drive Information:

1. Open the **Applications** folder on your Macintosh hard drive and double-click the **Maxtor OneTouch Settings** icon to open it.

The **Maxtor OneTouch Settings** window should appear.

2. In the lower part of the window, you should see your OneTouch Drive listed and any other compatible Maxtor Drives currently connected and turned on.

Here you can find out useful information, including:

- Model
- Serial Number
- Application to be opened by the OneTouch button

Customizing your OneTouch button:

Launching a different application or file

You can launch most any application or file on your computer with the OneTouch button. For example, you could use it to launch a program like QuickTime or even a specific QuickTime file.

1. Go to your **Applications** folder on your Macintosh Hard Drive.
2. Double-click the **Maxtor OneTouch Settings** icon to open it.

The **Maxtor OneTouch Settings** window should appear.

3. In the lower part of the screen you should see 'Volumes,' 'Maxtor OneTouch Drives' and 'Open. . .'

Your Maxtor OneTouch drive should appear in this area. If you have multiple OneTouch drives you will be able to select each one separately.

In the 'Open...' section of the screen, you should see the Retrospect icon and the words: Maxtor OneTouch. This is what is currently set to open when you press the

button on your OneTouch drive. It's very simple to select a different program or file.

4. Make sure your drive is selected in this window and click **Select Action**.

A window will open where you can find and select the application or file on your system.

5. Find the application or file that you would like to open. You'll most likely need to navigate to your Applications folder to do this. Once you've found it, go to the next step.
6. Select your application or file and click **Open**.
7. Close the **Maxtor OneTouch Settings** utility.
8. Now, try out your new settings by pressing the button on your OneTouch drive.

The new application or file that you selected should open.



If your selected application does not function properly with the OneTouch button using the steps outlined above, it may not be compatible or supported with the OneTouch feature. Double-check that you are selecting the correct file by opening it manually. If the application still does not open, contact the publisher of the application to find out if you are launching the correct file.

This file should open every time you push the button on your OneTouch drive.

How to reset the OneTouch button:

If you ever want to set your button back to launch your OneTouch script, it's very easy.

1. Open the **Maxtor OneTouch Settings** utility.

Once it opens, you should see your drive listed in the lower part of this window.

2. Make sure your OneTouch drive is selected.

3. Click the **Default Settings** button.

This sets the button back to it's original settings

4. Close the **Maxtor OneTouch Settings** utility.

Using Power Management

To minimize the power consumption of your drive while your computer is on, you can take advantage of the power management feature supported with the Energy Saver control panel on your Macintosh.

The power management feature sets the drive to automatically use less power after a predetermined period of time of inactivity. This is sometimes referred to as *spin down* since the drive's internal mechanical disks stop spinning. When the drive is in the spin down mode, one of the blue power lights will remain on and the other one will blink.

Power Management Settings

OS 9

1. Under the **Apple** menu, select **Control Panels**.

The Control Panels folder will open.

2. Find and open the **Energy Saver** control panel.

The **Energy Saver** window will open, and the **Sleep Setup** settings should be displayed.

3. Make sure the checkbox for 'Separate timing for hard disk sleep' is checked.

The slider at the bottom of the screen controls the time period of inactivity before the all system hard drives will go to sleep. It is possible to choose as short as 10 minutes and as long as 60 minutes. You can also set it to never go to sleep.

4. Select a time period using the slider in the bottom of the window.
5. Close the **Energy Saver** control panel.

OS X

1. Under the **Apple** menu, select **System Preferences**.

The **System Preferences** window will open.

2. Click the **Energy Saver** icon (a light bulb).

The **Energy Saver** panel will open, and the **Sleep** settings should be displayed.

3. Make sure the checkbox for 'Put the hard disk to sleep when possible' is checked.

The top setting, 'Put the computer to sleep when it is inactive for,' controls the time period of inactivity before the computer and its hard drives will go to sleep. It is possible to choose as short as 1 minute and as long as 60 minutes. You can also set it to never go to sleep.

4. Select a time period using the top slider in the window.
5. Close the **Energy Saver** control panel.

Installing Applications on Your Drive

You may install and run applications from your OneTouch drive like any other drive on your system.



Some Macintosh-based applications installed on your drive will only run on the computer where the application was installed. If you move your drive to any other computer, the application may no longer function. Once the drive is reconnected to the computer where the application was originally installed, the application will function properly.

Moving Data Between Two Systems

Your Maxtor OneTouch drive provides a great tool for moving large amounts of data between two systems. For more information see the Maxtor online knowledgebase: <http://www.maxtorkb.com>

Playing Games

CD-ROM-based games typically run faster when they are installed on a hard drive rather than running them from the CD. You can use your OneTouch drive to store and play CD-ROM games. See "Customizing your OneTouch button:" on page 19 for more information.

To install a CD-ROM game

1. Start the install program on your game CD.
2. Select **Maximum Install** (if supported), if you are asked how to install the game on your system.

This option installs most or all of the game's software onto your drive.

3. When asked for the location to install the software, specify an existing folder or create a new folder on your drive.

Storing Audio

Using your computer as an audio jukebox is a very popular application. This allows you to store and play thousands of your favorite songs. You can also create and manage an audio library on your OneTouch drive. A popular web site to learn more about these audio applications is at <http://www.mp3.com>.

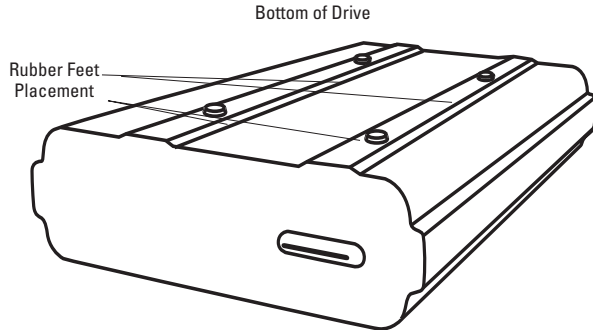
To use your drive to store your audio library, you need to specify a folder on the drive as the default location for audio files in your audio jukebox software.

Adding Rubber Feet to Your OneTouch Drive

If you plan to use your drive on a desk surface, your kit includes four rubber feet to protect your drive and the surface of your desk.

To apply the feet:

1. Make sure your drive is disconnected properly from your computer. (See "Connecting and Disconnecting the Drive" on page 15).
2. Make sure your drive is turned off, by turning off the power switch on the back of the drive.
3. Turn your drive so that the ridges are facing up. This is the bottom of the drive.
4. Place two rubber feet on each ridge on the bottom of your drive. One should be placed near the front and the other toward the back of each ridge.



Using Security Lock

Your new drive includes a security locking slot on the back of the drive. The security locking slot is compatible with most security locking cables, including those offered by Kensington.

4 Backing Up Your System

One valuable use of your new Maxtor OneTouch drive is to backup your complete system. By using Retrospect Express, you can backup everything and restore your complete system, if you ever need to.²

What's contained in a full system backup?

- Your current operating system
- Your applications
- Your personal files
- Your computer's settings

In the following section, you'll learn how to create a script to back up your complete system and you'll do your first backup. A script is simply a set of instructions that will tell Retrospect Express what files you want to copy, where you want to put them and when you'd like the copying to take place. In Chapter 6, we show you how to restore all the files on your system in the event that your system is damaged or completely erased.²

² The Maxtor OneTouch drive, in combination with the included Dantz Retrospect software, supports a complete system restore capability (Operating System, drivers, applications, settings and user files) back to the original computer system (running the same operating system) that the backup copy was made from, when performed

according to the steps described in this chapter. If you need to restore data to a different computer and / or a different operating system, this product will only support the restoration of user files and does not support under those circumstances restoration of the Operating System, drivers, applications or settings.

Before you begin. . .

In order for your system backup to be successful, you need to know how big your complete system is and if your backup drive has enough capacity to store all your files.

In the following steps, you will determine how big each drive on your system is. This is important information to have, not only to back up your system, but also in case you ever need to restore your system. We encourage you to write down this information and keep it in a safe place, just in case.

To determine how big your system is:

1. Starting from the desktop, you should be able to see each drive's icon.

You will view information on each drive individually and then add them up.

2. Select a drive's icon.

3. In OS X: Go to the **File** menu and select **Get Info** (OS X 10.2) or **Show Info** (OS X 10.1).

In OS 9: Go to the **File** menu and select **Get Info**, then **Information**.

4. The **Info** window will open.

In this window you will be able to see the **Capacity** of the drive, as well as the amount of space **Used** on the drive. Make a note of the **Capacity** number and close the window.

5. Repeat steps 1 - 4 for each drive on your Macintosh.
6. Add up the **Capacity** numbers for all of your drives.

This is how much total space is needed to backup your complete system, if it were full.

7. Use this number as a guide to figure out how much space you will need on your backup drive to store your complete system.

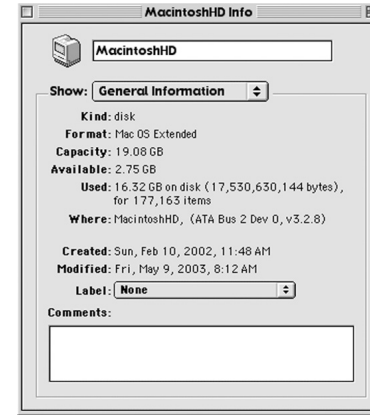



Figure 8. Drive information: Macintosh OS 9

Backing up your complete system

 You cannot run Retrospect Express under OS 9 to create system backups of OS X. You must run Retrospect Express under OS X to back up an OS X system.

1. Open **Retrospect Express**

The **Retrospect Express Directory** window will open.

2. Click the **Automate** tab.

The **Scripted Retrospect operations** section will appear.

3. Click **EasyScript**.

The 'Welcome to EasyScript' window will appear.

4. Click **Next**.

The **Backup media** page will appear.

5. Select **File backup set (hard disk)** and click **Next**.

The **Backup frequency** page appears asking you: 'How often do you want to back up?'

6. Choose either **Every day** or **Once a week**

If you chose the once a week backup option, choose the **Day** also.

7. Click **Next**.

The **EasyScript backup strategy** window appears.

8. Choose a start time for your backups.

9. Click **Create**.

A window appears asking you: 'What do you want to name your backup set?'

10. Type in a memorable name, like **System Backup**, and click **New**.

The **Choose a Folder** window will now appear.

11. Select the drive you plan to back up to (your Maxtor OneTouch drive) and click **Save**.

A window will appear, telling you: 'EasyScript has created and scheduled a script'

At this point, you can click **Open Script** to view your script and make changes, or you can simply click **Done** to finish. You'll learn how to make basic changes to your script later in this chapter.

12. Click **Done**.

You now have a finished script that will automatically backup your system at the time and date you specified. All you have to do is leave your computer and Maxtor OneTouch drive on. You don't even have to open Retrospect Express!

We highly recommend that you run your backup script manually the first time to make sure that it backs up everything you need. You'll learn how to do this in the following section.

Doing your first backup: testing your script

1. Open **Retrospect Express** (if not already open).

The **Retrospect Express Directory** window will open.

2. Click on the **Run** drop-down menu at the top of the screen and pull down to select **EasyScript Backup**.

The **EasyScript Backup** window will appear.

3. Make sure **Execute now** is selected and click **Execute**.

Retrospect will now start scanning your system, the **Immediate Backup** window will open and the backup process will begin.



Normal backup may take a long time, the first time. Each time after that, it will take less time. This is because Retrospect compares the files in your actual system to the backup version and only copies new files or files that have been modified since the last backup. For more information on backup strategies, see the Express User's Guide.

When the backup is complete, the message: 'Execution completed successfully' should appear.

If your system backup was successful, you can quit Retrospect.

4. OS 9: Go to the **File** menu and select **Quit**.

OS X: Go to the **Retrospect Express** menu and select **Quit Retrospect Express**.

When you quit Retrospect, a window will appear telling you: 'Script EasyScript Backup is next for automatic execution.'

This is a reminder to make sure that the drive you plan to use for the next backup (your OneTouch drive) is connected to your computer and ready. If you are not sure, you can click the **Check Media** button to have Retrospect check for you.



If you get the message that 'the configuration isn't ready,' click **Don't Quit**, make sure that your OneTouch drive is connected and turned on and quit Retrospect again.

5. Click **Quit**.

Congratulations. You've now done your first system backup!

See "Disaster Recovery" on page 28 in chapter 5, " for guidelines on how to restore your system using the system backup you just created, in the event that you need to.

Making changes to your backup script

If you decide you want to change your backup script, follow these steps:

To change the time of your backup:

1. Open Retrospect Express.

The **Retrospect Express Directory** window will appear.

2. Click the **Automate** tab.

The **Scripted Retrospect operations** section will appear.

3. Click **Scripts**.

The **Scripts** window will appear.

4. Select your script. It will be labelled **EasyScript Backup**.

5. Click **Edit**.

The **EasyScript Backup** window will appear, showing the details of your backup script.



In this window you can modify many aspects of your backup, including which drives you will back up and the backup destination. For more information, see the Retrospect Express User's Guide that came with your Maxtor drive.

6. Make any changes to your script needed.

7. Close the **EasyScript Backup** window.

A message will appear asking: 'Save changes to script?'

8. Click **Save**.

9. If the **Scripts** window is still open, close it.

10. Quit Retrospect.

When you quit Retrospect, a window will appear telling you: 'Script EasyScript Backup is next for automatic execution.'



If you get the message that 'the configuration isn't ready,' click **Don't Quit**, make sure that your OneTouch drive is connected and turned on and quit Retrospect again. If this still doesn't work, try creating a new EasyScript.

Your modified script has been saved and will run at the next scheduled time as long as your computer is on and your Maxtor OneTouch drive is connected and turned on.

4

5 Disaster Recovery

If disaster has struck and your system software is damaged or completely erased, this chapter provides you with step-by-step instructions on how to restore your system.³

These steps will be successful **ONLY** if you have backed up your system using Retrospect and the steps outlined in the previous chapter.

What's contained in a full system restore?

- Your current operating system
- Your applications
- Your personal files
- Your system's settings and updates

Before you begin. . .

Because of factors like processor type, motherboard, video display card and other hardware that is specific to your brand and model of computer, we urge you to **ONLY** do a full system restore to the same computer. Restoring your operating system, its applications and settings to another computer with different hardware is not supported and may cause significant problems with that computer.

- 3 The OneTouch drive, in combination with the included Dantz Retrospect software, supports a complete system restore capability (Operating System, drivers, applications, settings and user files) back to the original computer system (running the same operating system) that the backup copy was made from, when performed according to the steps described in this chapter. If you need to restore data to a different computer and / or a different operating system, this product will only support the restoration of user files and does not support under those circumstances restoration of the Operating System, drivers, applications or settings.

Basic Guidelines

For your system restore to be successful, we recommend that you restore your system only:

- To the same computer and same internal drive
- To the same computer and new internal drive

If you cannot restore to your original computer or an identical system, you can restore all of your personal files to a different computer. For more information see <http://www.maxtor.kb.com>.

Restoring your complete system

Before you begin, you must format your system hard drive and install your operating system. If you had multiple partitions on your hard drive(s), you must create and format the same number of disk partitions. These partitions must be of equal or greater size to what they were on your original system. For information on how to partition and format your system drive, see the Maxtor Knowledgebase online at: <http://www.maxtorkb.com>.



Most Macintosh computers are setup at the factory with only one partition per hard drive. If you did not have multiple partitions on any of your hard drives, all you have to do is reformat your hard disk(s) and re-install your Macintosh operating system. For more information, see your Macintosh manual.



Do not partition or reformat the Maxtor OneTouch drive that your system backup is stored on.

Once you get your system running, reinstall Retrospect Express using the Maxtor Install CD. See "Installing Your Drive" on page 5 in chapter 2.

Restoring your system - Step-by-step

1. Prepare your hard drive - (Partition, if necessary, and format.)
2. Install your operating system.
3. Reinstall Maxtor OneTouch software including Retrospect Express. (For more information see page 5 in chapter 2.)
4. Open Retrospect Express.

The **Retrospect Express Directory** window will open.

5. Click **Restore**.

A window will appear asking you to 'Select the restore type'

6. Select **Restore an entire disk** and click **OK**.

The 'Accessing more backup sets' window will appear asking you to open an existing catalog file or rebuild one.

7. Click **Open**.

Find and select the system backup set on your Maxtor OneTouch Drive.

8. Click **Open**.

Your system backup set should appear in the top part of the **Restore from Backup:Source** window. Make sure it is selected.

9. Click **OK**.

The **Destination Selection** window will now appear, asking you to choose a 'Destination for restore.'

Make sure **Restore Entire Disk** is selected, and select the drive that you want to restore your system to (your Macintosh hard drive where the system was originally installed).

10. Click **OK**.

A window will appear asking you if you really want to restore to the drive you selected, replacing it's entire contents.

11. Click **Replace**.

Retrospect will scan your system (This may take a few minutes).

The **Restore from Backup** window will appear, allowing you to confirm the source (your OneTouch drive) and the destination (your Macintosh hard drive) for the restore.

12. Click **Restore.**

A window will appear asking you: 'Really Execute?'

13. Click **OK.**

(If the 'Really Execute?' window appears again, click **OK**.)

Retrospect will begin to restore your system.

This process may take several minutes.

When Retrospect finishes, you should see the message: 'Execution completed successfully.'

You can view the Log to make sure that all of your files were restored by going to the **Window** menu and selecting **Log**.

14. Quit Retrospect. OS 9: Go to the **File menu and select **Quit**. OS X: Go to the **Retrospect Express** menu and select **Quit Retrospect Express**.**

15. Restart your Macintosh.

If the system restore was successful, you should find all of the files that you originally backed up. If not, make sure that you understand how to back up your system. See "Backing Up Your System" on page 23 in chapter 4. By scheduling automated backups, you're less likely to lose your valuable files in the future.

5

6 Troubleshooting and FAQs

This chapter provides troubleshooting tips and answers frequently asked questions about installing your Maxtor OneTouch drive.

You can find additional information in the Maxtor Knowledge Base at www.maxtorkb.com or contact Maxtor at www.maxtor.com.

Chapter Contents

General Troubleshooting

1. Drive does not appear on my system	33
2. My drive appears to read files significantly faster than it writes files	34
3. My drive shows less capacity than on the box label	35
4. Maxtor OneTouch function does not work	35
5. My drive is not copying or backing up a network drive	35
6. What does partitioning a drive mean?	35
7. How do I partition a drive?	36

Application Troubleshooting

8. Applications installed on the drive stopped running	36
9. My computer drops frames when I capture video from my Canon camcorder	36

General Troubleshooting

1. Drive does not appear on my system

- Is the drive running?

The two blue lights on the front of the drive should be illuminated, and you should be able to feel the hum of the drive when you place your hand on it. In addition, the light on the power adapter should be lit.

Make sure the power adaptor is securely plugged into the drive and into a power outlet. If the drive is plugged into a power strip, try plugging it directly into the wall outlet, in case the power strip is not working properly.

- Is the FireWire cable connected properly?

Verify that the cables are connected according to the installation instructions of “Installing Your Drive” on page 5 of chapter 2.

- Have you tried turning off your drive and turning it back on?
 - a. While your computer is running, unplug the FireWire cable from the drive, then turn off the drive.
 - b. Wait ten seconds, then turn the drive back on.
 - c. Wait another ten seconds, and plug the FireWire cable in. See if the drive appears on your desktop.

If the drive does not appear on your desktop, try the tips in the next section for your computer's specific operating system. If the drive still does not appear on your system, visit the Product Support area of the Maxtor web site at www.maxtorkb.com for further assistance.

Do you have the most current Maxtor software?

Check the Product Support area at: www.maxtorsupport.com to determine the latest version.

Are **AppleTalk** and **File Sharing** off? If not, turn them off and reboot. If, after rebooting, the drive still does not mount, try turning the drive off and back on again.

Follow these steps to open the Apple System Profiler.

For OS X:

- Go to the **Apple Menu** and select **About This Mac**.

The **About this Mac** screen will appear.

- Click the **More Info** button. The **Apple System Profiler** will open.
- Click the **Devices and Volumes** tab.
- Depending on which Maxtor hard drive you are using, your Maxtor drive should appear as a rectangle in the **FireWire Information** section of the screen.
- Clicking any of the horizontal triangles next to the different rectangles on this screen, shows more detailed information about the device, including the manufacturer.

If you can't find your Maxtor drive, try turning the drive off, waiting 10 seconds and turning it back on.

For OS 9:

- Go to the **Apple Menu** and select **Apple System Profiler**. The **Apple System Profiler** will open.
- Click the **More Info** button. The **Apple System Profiler** will open.
- Click the **Devices and Volumes** tab.
- Depending on which Maxtor hard drive you are using, your Maxtor drive should appear as a rectangle in the **FireWire** section of the screen.
- Clicking any of the horizontal triangles next to the different rectangles on this screen, shows more detailed information about the device, including the manufacturer.
- If you can't find your Maxtor drive, try turning the drive off, waiting 10 seconds and turning it back on.

If your drive does not appear after trying all of the suggestions above, visit the Product Support area at: www.maxtorsupport.com.

2. My drive appears to read files significantly faster than it writes files

Your drive includes a special data protection function, which automatically verifies all data written to the drive during the first few uses of the product. It's similar to the break-in period for a new car. The verification process is performed while data is being written, causing reduced write performance.

This verification function is automatically turned off after your drive has been powered on and off ten times (you need to leave

the drive running for 15 seconds before powering it off and leave it off for 15 seconds before powering on again). After this break-in period, you should see approximately the same performance for reading and writing data.

3. My drive shows less capacity than on the box label

Hard drive capacity is defined in terms of decimal (base 10) capacity. In decimal notation, one megabyte (MB) is equal to one million bytes and one gigabyte (GB) is equal to one billion bytes. We are most accustomed to the decimal system in everyday life. However, computers use the binary (base 2) numbering system. In the binary numbering system, one megabyte is equal to 1,048,576 bytes, and one gigabyte is equal to 1,073,741,824 bytes.

The Mac OS uses the binary numbering system. When you use your system to check your drive's capacity, multiply the value shown (displayed in base 2 megabytes) by 1,048,576 to determine the decimal equivalent for the hard drive's capacity.

Here is how to access hard drive capacity on your Macintosh:

- Go to your desktop and select the **external hard drive**.
- For OS X or later, choose **File>Get Info**.
- For OS 9, choose **File>Get Info>General Information**

4. Maxtor OneTouch function does not work

Here are a few items you can quickly check if your Maxtor OneTouch feature does not operate.

The Maxtor OneTouch button may not function when Retrospect Express is already running. To correct the problem:

- From the **File** menu, select **Quit**.

- Press the Maxtor OneTouch button again. Retrospect Express should open and your backup copy should begin

The OneTouch backup copy will not run if the Retrospect software cannot locate either the source drive or the destination drive. To check this problem:

- Start Retrospect Express.
- Click the **Automate** tab at the top of the screen.
- Click the **Scripts** button.
- You should find a script called **Maxtor OneTouch**. This script defines what exactly will be backed up

If you do not see this file, follow the instructions in the "Setting Up the Maxtor OneTouch Feature" in chapter 2.

- Select the **Maxtor OneTouch** entry and then click the **Edit** button.

Confirm that both the source and destination drives (volumes) are specified and are currently running on your system.

If you rename either the source or the destination drives after you create the script, the backup will not work.

5. My drive is not copying or backing up a network drive

Your Maxtor OneTouch drive and Retrospect Express software are not supported for the purpose of copying or making backup copies of network drives available from your computer.

6. What does partitioning a drive mean?

Partitioning is a way of dividing up your hard drive into different sections which appear as separate drive icons in the Macintosh

OS. Partitioning helps you to manage files more easily. One common use of partitioning is to install your operating system in one partition and all of your applications in another.

7. How do I partition my drive?

There are a number of excellent programs for partitioning. For more information on the appropriate one for your operating system see the Maxtor Knowledge Base at:
<http://www.maxtorkb.com>

Application Troubleshooting

8. Applications installed on the drive stopped running

See “Installing Applications on Your Drive” on page 21 of chapter 3, for an explanation of possible reasons for and solutions to this problem.

9. My computer drops frames when I capture video from my Canon camcorder

Some models of Canon camcorders produced in 1998 and 1999 have trouble transferring DV data over the 1394 interface. For the latest information and a solution for this problem, search the Maxtor Knowledge Base at www.maxtorkb.com with the key word “Canon.”

Glossary

Byte – A unit of storage on a drive that holds a single character. A byte is equal to 8 bits.

Capacity – The amount of information, measured in bytes, that can be stored on a drive. Also known as *storage capacity*.

Daisy chain – A hardware configuration in which peripheral devices are connected to each other in a series. The FireWire interface, for example, supports a daisy chain of up to 62 drives.

Data Transfer Rate – The speed at which data transfers to and from the drive.

External Hard Drive – A external peripheral device containing a hard drive mechanism connected to a computer via a FireWire or USB interface.

FireWire – The FireWire interface is a high-performance, serial bus defined by the Institute of Electrical and Electronics Engineers (IEEE) as a standard for connecting digital devices together. It is ideal for connecting computers and hard drives to digital video and audio equipment.

Format – Formatting erases all information on a hard drive and sets up the file system for storing and retrieving files. On Macintosh systems, high-level formatting is often referred to as initialization. Low-level formatting sets up the locations of sectors on the drive. Your drive was formatted with the FAT32 file system at the factory.

GB – (Gigabyte) Equal to 1,000,000,000 (billion) bytes. For a detailed explanation, refer to page 29.

Hard Drive – An electromechanical device used for information storage and retrieval, incorporating one or more rotating disks on which data is recorded, stored, and read magnetically.

Hot-Swap – This feature allows you to connect and disconnect external devices while the computer and the devices are running. External drives, such as the Maxtor Personal Storage 5000 can be hot-swapped.

KB – (Kilobyte) Equal to 1,000 (thousand) bytes.

MB – (Megabyte) Equal to 1,000,000 (million) bytes.

Mb – (Megabit) When used to describe data storage, equal to one million bits.

Mbps – (Megabits per second) When used to described data transfer rates, it refers to one million bits per second.

Operating System – Software that allows the user and programs installed on your system to communicate with computer hardware such as a hard drive and processor.

Partition – A way to logically divide a hard drive so that an operating system treats each partition as if it were a separate hard drive. Each partition is assigned a unique drive icon.

Port – A connection or socket on the motherboard, controller card, case, or chassis for connecting peripheral devices, such as a FireWire socket.

Script – A saved backup procedure for Retrospect that you can schedule to run at some future date and time or on a repeating schedule, such as daily. You may create as many scripts as you wish.

Spin Down – Refers to the actually spinning of the disk mechanism. When a disk spins down, it stops spinning, thus conserving power.

Startup Disk – The drive from which the operating system loads to start up your computer.

TB – (Terabyte) Equal to 1,000,000,000,000 (trillion) bytes.

Volume – A fixed amount of storage on a hard drive. The term volume is often used as a synonym for the drive itself, but it is possible for a single drive to contain more than one volume or for a volume to span more than one drive.

Index

A		F		P		Service and Support	
About this Guide	4	Files		Partition	35	Dantz	4
Adding Rubber Feet to Your OneTouch Drive	22	restoring	17, 30	Playing Games	21	Maxtor	4
Application Troubleshooting	33	FireWire interface		Power Management	20	T	
Applications installed on the drive stopped running	36	connecting 7, 10		Push-button feature	2, 11, 16	To determine how big your system is	23
Archiving files	17	H		R		Troubleshooting	33
B		Handling precautions	3	Registering the drive	7, 11	U	
Backing up your system	23	How do I partition my drive?	36	Restoring files	17, 30	Using Power Management	20
C		I		Restoring your complete system	30	Using Retrospect	17
Cable		Installing Applications on Your Drive	21	Retrospect, Installing the software	5	W	
FireWire	7, 10, 33	Installing Your Drive	5	Retrospect User guide	17	Warranty	inside front cover
Changing Your Maxtor OneTouch Script	18	Installing Drivers Only	13	S			
Connecting and Disconnecting the Drive	15	M		Setting Up the Maxtor OneTouch Feature OS 9	11		
D		Moving Data Between Two Systems	21	Setting Up the Maxtor OneTouch Feature OS X	7		
Dantz Support	4	O		Storing Audio	21		
Data, restoring	17, 29	OneTouch Drive Components	2	System Requirements	3		
Disaster Recovery	28	OneTouch lights	15				
Disconnect the drive	15						
Drive components	2						
Drive does not appear on my system	33						

Copyright

© 2003 Maxtor Corporation. All rights reserved.

Maxtor and the Maxtor logo are registered trademarks of Maxtor Corporation. Maxtor Personal Storage and Maxtor OneTouch are trademarks of Maxtor Corporation. Dantz, the Dantz logo, and Retrospect are registered trademarks and Retrospect Express is a trademark of Dantz Development Corporation. Mac, the Mac logo, iMac, Power Macintosh, FireWire, and the FireWire logo are trademarks of Apple Computer, Inc., registered in the U.S. and other countries. All other brands or products are trademarks or registered trademarks of their respective holders. Product specifications are subject to change without notice. Actual products may vary from photos shown.

Patents

Dantz Development Corporation: U.S. patents 5,150,473 and 5,966,730. Other patents pending.

FCC Declaration of Conformance

This device complies with part 15 of the FCC Rules. Operation is subject to the following two conditions: (1) this device may not cause harmful interference, and (2) this device must accept any interference received including interference that may cause undesired operation.

Maxtor Corporation

500 McCarthy Blvd.
Milpitas, CA 95035
www.maxtor.com

7/03 P/N: 20241400

The Maxtor logo is rendered in a bold, black, sans-serif font. The letters 'M', 'a', and 'x' are significantly larger and more prominent than the letters 't', 'o', and 'r'. A registered trademark symbol (®) is positioned to the upper right of the final 'r'.