

# SpinPoint™

V4300

4.3/6.4/8.4/12.9GB

**V** series



## SAMSUNG HARD DISK DRIVE

- 5400 RPM Spindle Speed
- 9.5 ms Average Seek
- 66.6 MB/sec Ultra DMA
- 512KB Cache Buffer
- S.M.A.R.T. -3 Support

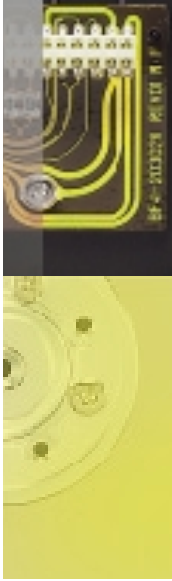


**SAMSUNG**

S  
A  
M  
S  
U  
N  
G  
H  
A  
R  
D  
D  
I  
S  
K  
D  
R  
I  
V  
E

# V4300 - Samsung Hard Disk Drive

SV0432D / SV0643D / SV0844D / SV1296D



## Contact

Corporate HQ  
Tel. 82-2-751-6886  
Fax. 82-2-751-6939  
Website: [samsungelectronics.com](http://samsungelectronics.com)

US/Canada  
Tel. 1-408-544-5614  
Fax. 1-408-544-5652  
Website: [www.sosimple.com](http://www.sosimple.com)

UK(Europe)  
Tel. 44-181-391-0168  
Fax. 44-181-974-2800  
Website: [www.samsung-storage.com](http://www.samsung-storage.com)

Germany  
Tel. 49-180-5121213  
Fax. 49-180-5121214

Singapore(Southeast)  
Tel. 65-568-7592  
Fax. 65-569-5900

Australia  
Tel. 612-9763-9700  
Fax. 612-9764-6440

HongKong  
Tel. 852-2862-6365  
Fax. 852-2866-1316

India  
Tel. 91-11-631-0564  
Fax. 91-11-693-2607

Japan  
Tel. 81-3-5641-9890  
Fax. 81-3-5641-9861



Spinpoint is a trademark of Samsung Electronics Co., Ltd. All brand and product names are trademarks of registered trademarks of their respective companies design and specifications are subject to change without notice. ©1998 Samsung Electronics Co., Ltd. All right reserved.  
Rev.1 1/27/1999

### Drive Architecture

Formatted Capacities	
Gigabytes per Drive	4.3/6.4/8.4/12.9
Physical Organization	
Disks	1/2/2/3
Heads	2/3/4/6

### Functional Specifications

Actuator Type	Rotary Voice Coil
Interface	Ultra ATA-66 / E-IDE
Servo	Embedded Sector Servo
Recording Method	16/17 EPR4
S.M.A.R.T.-3 Support	

### Performance Specifications

Seek Time (RD/WT typical)	
Track to Track	2.0/2.0 ms
Average	9.5/10.5 ms
Full Stroke	20/22 ms
Average Latency	5.56 ms
Spindle Speed	5,400±0.1% rpm
Data Transfer Rate	
Buffer to/from Media(max.)	200 Mbits/s
Buffer to/from Host (max.)	66.6 Mbytes/s
Buffer Size	512 Kbytes (2 Mbytes Optional)

### Reliability Specifications

Recoverable Read Error	1 in 10 <sup>30</sup> bits
Non-recoverable Read Error	1 in 10 <sup>24</sup> bits
MTBF (POH)	500,000 hours
MTTR (typical)	5 min
Start/Stop Cycles	50,000
Component Design Life	5 years

### Environmental Specifications

Temperature	
Operating	5 ~ 55°C
Non-operating	-40 ~ 70°C
Thermal Gradient (max.)	20°C/15%/hr
Humidity (non-condensing)	
Operating	8 ~ 80 %
Non-operating	8 ~ 90 %
Maximum Wet Bulb (OP/NOP)	29°C/40°C

### Altitude (relative to sea level)

Operating	-200 to 10,000 feet
Non-operating	-1,000 to 40,000 feet

### Shock and Vibration

Linear Shock (1/2 sine pulse, 11 ms duration)	
Operating	10 G
Non-operating	75 G
Linear Shock (1/2 sine pulse, 2 ms duration)	
Operating	63 G Ref
Non-operating	200 G
Rotational Shock (1/2 sine pulse, 2ms duration)	
Non-operating	15,000rad/S <sup>2</sup>
Vibration (swept sine)	
Operating (1/2 octave per minute)	
5 ~ 21 Hz	0.034" (double amplitude)
22 ~ 300 Hz	1.5 Gp-p
300 ~ 500 Hz	0.5 Gp-p
Non-operating(1 octave per minute)	
5 ~ 21 Hz	0.195" (double amplitude)
22 ~ 500 Hz	8 Gp-p

### Power Consumption (typical)

Power Supply Tolerance	+5V±5% / 12V±10%
Power Up Current(max.)	800 / 1550mA
Read/Write	4.8 W
Seek (1/3Seek, 30% Duty)	6.0 W
Idle	4.5 W
Standby	1.3 W
Sleep	1.3 W

### Acoustic Noise

Sound power (typical)	
Idle	3.8 bels
Random Read/Write	4.0 bels

### Physical Dimension

Height	1 inch
Width	4 inches
Depth	5.75 inches
Weight	1.3 pounds

Distributed by: \_\_\_\_\_